

decor 390

Atria Roller Blind System



decor 390

Atria Roller Blind System

The decor 390 Atria Roller Blind system is a simple and effective way of shading horizontal and sloping glazing. An innovative spring tensioning system keeps the fabric taut and enables the blind to be drawn at any angle, including vertically upwards.



Made in the UK

Our UK manufacturing facility ensures total quality control, short lead times and low transport costs.



Choose your Style

A wide choice of fabrics and hardware finishes to suit your situation.



Quiet Operation

Available with advanced quiet motor technology and soft-close electronic brake.



Recyclable

The majority of a decor 390 blind can be recycled, conserving energy and resources for future generations.



Environmentally sustainable fabrics

Choose sustainable fabrics from Decor Systems range to pick up environmental credits.



Integration Options

A wide variety of options for AV and BMS integration, including dry contact, RS485 and master / slave control.



5 Year Warranty

For peace of mind and reduced life cycle costs, decor 390 comes with the Decor Systems standard 5 year warranty.

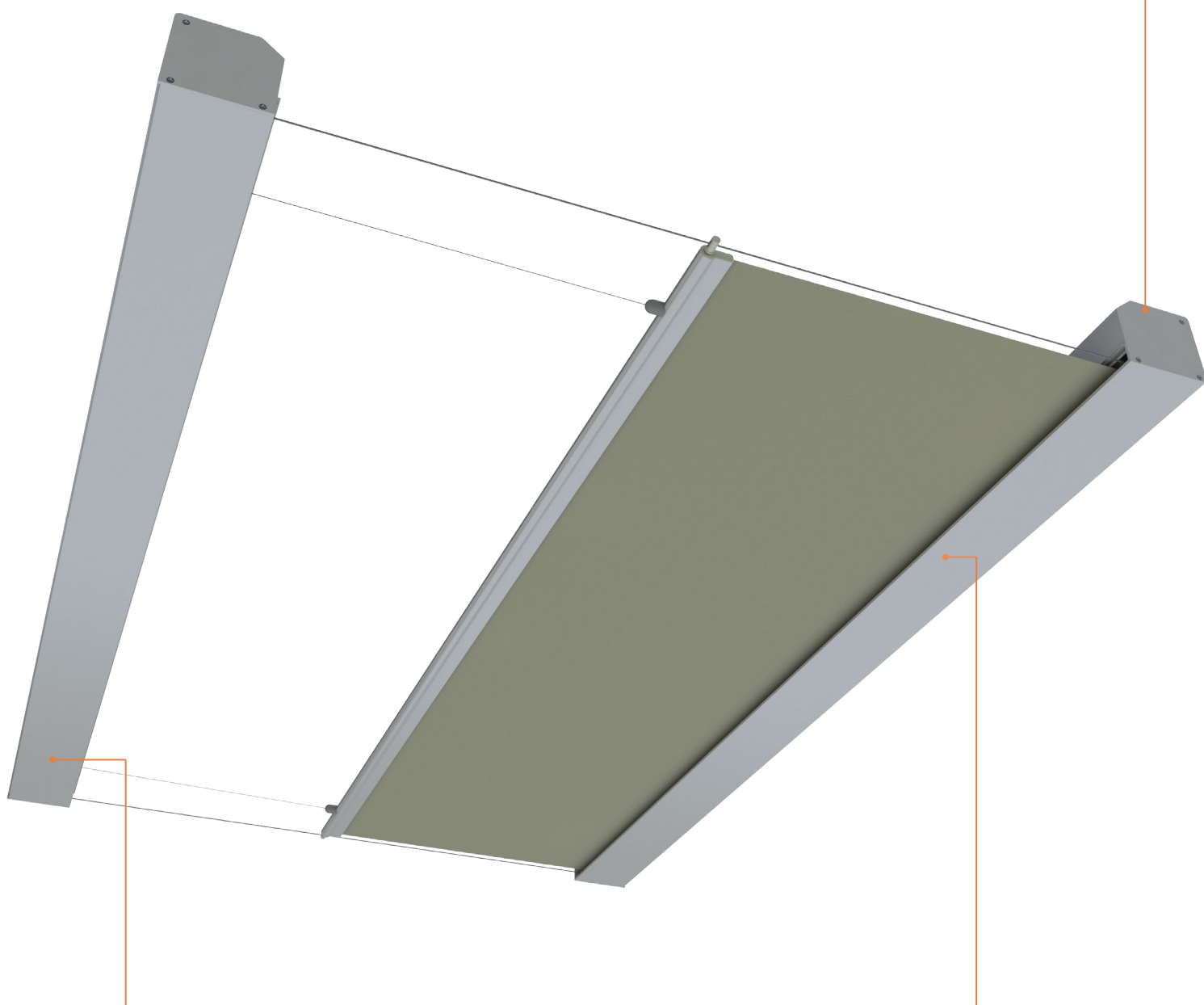


Inherently Child Safe

Specify with confidence, knowing that decor 390 is compliant with the revised BS EN 13120:2009 + A1:2014 standard.

Motorised Operation

Smooth, quiet and powerful tubular motors with wired or radio control options and soft-close electronic brake.

**Constant Tension Recoil Unit**

Innovative recoil system which maintains a constant tension on the blind allowing it to be drawn horizontally or even vertically upwards.

Fully enclosed Cassette

Neat powdercoated profile conceals the roller and brackets and provides a strong fixing plate to spread the load evenly across the opening.

Options

Indicates standard option

FABRIC TYPES

The fabric is the most important part of a blind. decor 390 blinds are available with a wide range of fabrics to suit your requirements. Some fabrics have anti-microbial treatment, solar reflective coating and recycled content – see our website for the full range. Below are the three main fabric types.



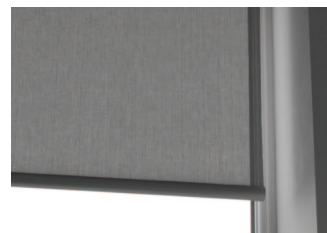
Blackout

These fabrics are made from opaque material to give zero light transmittance. Suited to applications requiring maximum light exclusion such as conference rooms, bedrooms or south facing facades



Glare Control

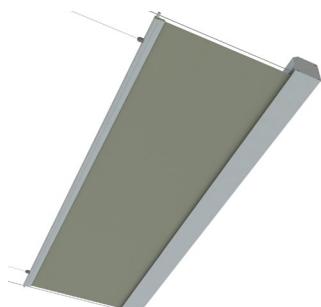
These fabrics are typically close-woven synthetic yarns, which provide total privacy and diffuse the direct sunlight to create a comfortable environment for reading and using computers.



Screen

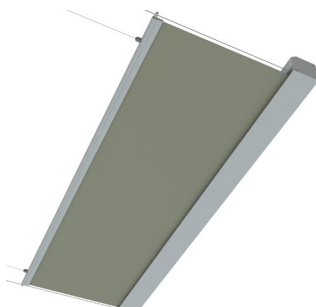
These fabrics all have an element of openness in the weave, making them ideal for large areas of glazing where they help attenuate the light without losing visual contact with the outside world. Ideal for open plan offices, atria and circulation spaces.

OPERATION TYPES



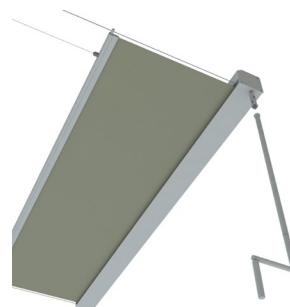
Hard wired Motor

240v AC motor with hard wired control circuit as standard for ultimate reliability.



Radio Motor

240v AC motor with hand held or wall mounted wireless control minimises the amount of cabling, making it ideal for retrofit situations.



Revoshaft™

An option for smaller blinds within easy reach, the Revoshaft™ gear operation is a simple solution available with either fixed or detachable handle.

MOUNTING OPTIONS



Recess Fix

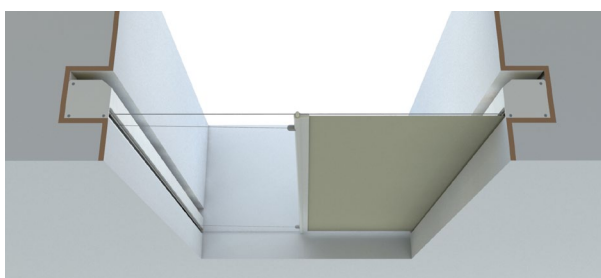
The most common scenario for roof lights, north lights, glazed lanterns and atria, the blind is fixed to the sides of the reveal or recess.



Face Fix

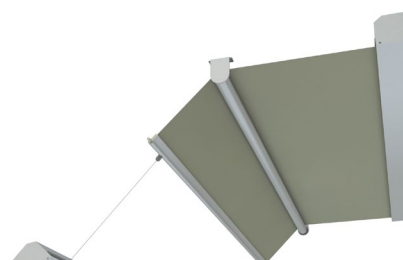
For situations where the recess is not deep enough to mount the blind, the decor 390 can be face fixed to the ceiling.

OTHER OPTIONS



Pocket Fix

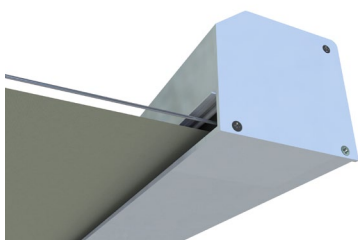
Pockets formed in the skylight recess sides can be used to completely conceal the blind when it is open. The pockets should be a minimum of 115mm high x 115mm deep to ensure there is adequate room for installation and maintenance.



Intermediate Fabric Support

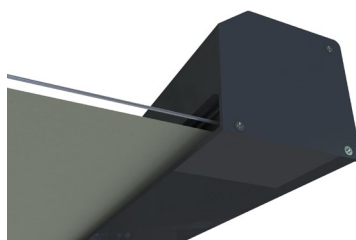
To make the blind change direction of draw, or provide additional support for extra long draw, ideal for a glazed mansard roof or orangery.

HARDWARE FINISHES



White Powdercoated

Clean and clinical

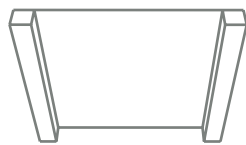


Custom RAL Powdercoated

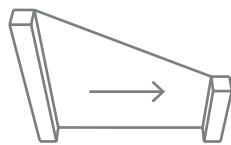
Colourful and Coordinated

Technical

CONFIGURATION

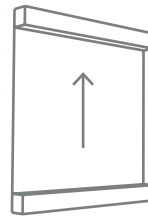


Rectangular



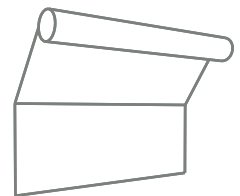
Triangular

The fabric is cut at an angle on one edge. The end has a minimum of 500mm flat.



Bottom Up

Blind draws vertically upwards from the bottom.



Angled

Intermediate fabric supports are used to change direction by up to 45 degrees per support.

NBS FORMAT SPECIFICATION

decor 390 Atria Roller Blind System

Manufacturer: Decor Systems

Web: www.decor systems.co.uk

Email: sales@decor systems.co.uk

Tel: +44 (0)30 3030 0120

Product reference: Decor 390 Atria Roller Blind System

Fabric: Anti Glare fabrics: Decor Catalyst / Decor Signature*

Blackout fabrics: Decor Mystique / Decor Tempest*

or Screen Fabrics: Decor Alfresco / Decor Arctic / Decor Verve / Decor Zenith*

Fabric Colour: TBC from this range

Operation: Hard Wired Motor / Radio Control Motor / Fixed Revoshaft™ / Removable Revoshaft™*

Configuration: Rectangular / Triangular / Bottom-up / Angled*

Hardware Finish: White Powdercoat / Powdercoat to RAL XXXX*

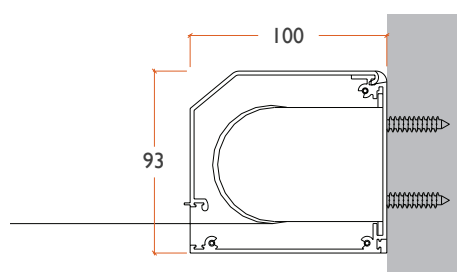
Fixing: Recess Fix / Face fix*

Accessories: Intermediate Fabric Supports*

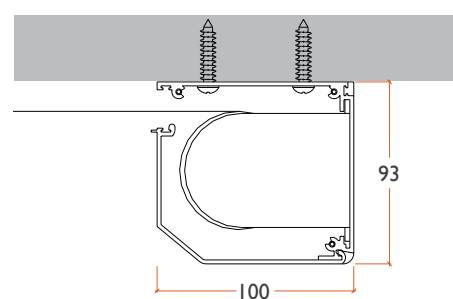
*Delete as appropriate

DIMENSIONS

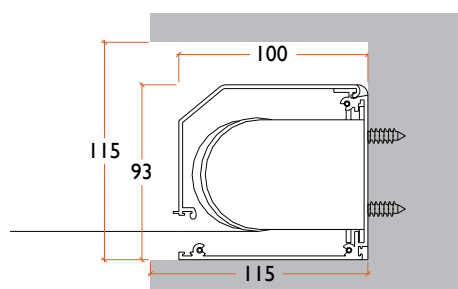
All dimensions in millimetres



Recess Fix



Face Fix



Pocket Fix

MAXIMUM SIZES

Maximum sizes depend on fabric chosen. The below sizes are based on decor Tempest at 400gsm.

	Min Width	Min Draw	Max Width	Max Draw	Max Area
Revoshaft Operation	400	500	3000	3000	4m ²
Motorised Operation	700	500	3000	3000	4m ²

PRODUCTS

Vertical Blinds	Blackout Binds
Venetian Blinds	Panel Blinds
Roller Blinds	Curtain Tracks and Poles
Roof Blinds	Cubicle Tracks
Pleated Blinds	Curtains
Roman Blinds	Window Films
