

# bimstore.co.uk

---

Solar Contracts  
Decor Roller Blinds  
User Guide

Version 1.0 | Revit 2013  
24th January 2013

## Loading the material library

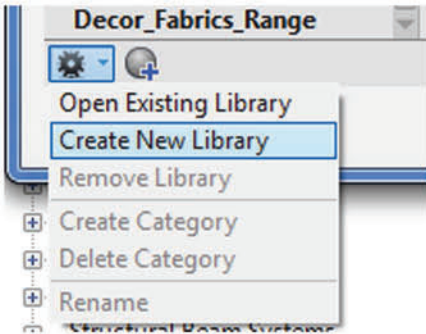
These components contain manufacturer specific render materials. Revit will try and find these materials on your computer in the following directory:

**C:\LocalRVT\Bimstore\Materials\Solar**

The first time you use these components you will need to copy the images contained in the 'Materials' folder included in the download, into the 'Solar' file above (you may need to create the folder structure if you have not used bimstore components with custom materials before).

The materials will now load the custom render finishes from this location.

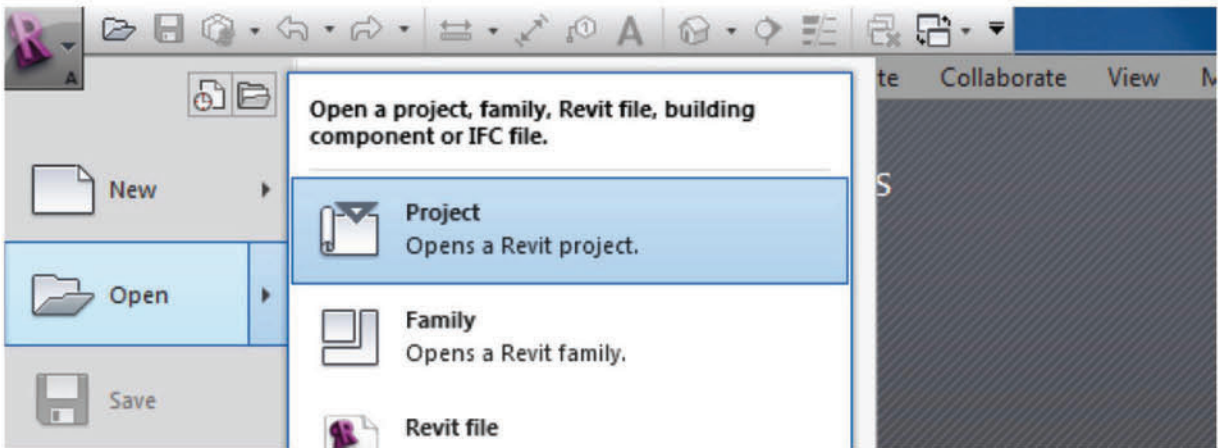
Each component comes pre loaded with one colour from the standard fabric ranges available to that product. The full range of fabric colours available are included in the 'Decor Fabrics Range' material library located in the 'Materials' folder. This library can be loaded into you projects by opening the 'Material Browser' in your project - Select 'Create New Library' and insert the Decor Fabrics Range'



## Loading Family Components into your project

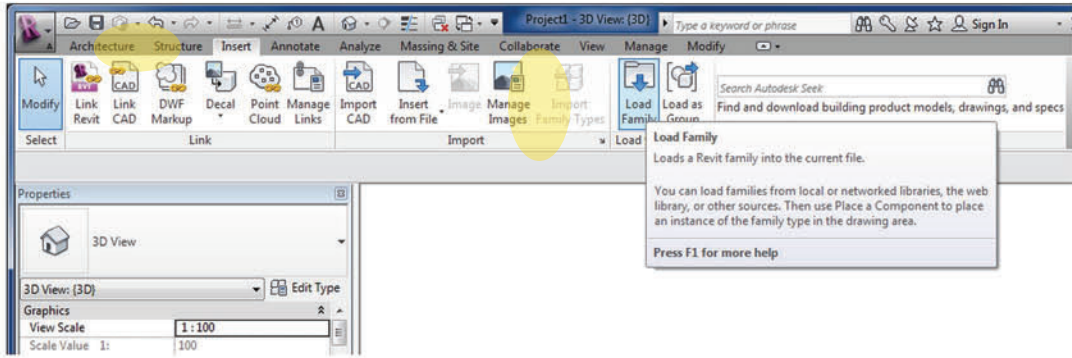
These components have been created as a family with standard configurations pre-defined as 'types'. You can add the family into your project using the following method.

1. Open the Revit file containing your 'project', and navigate to a an appropriate view.

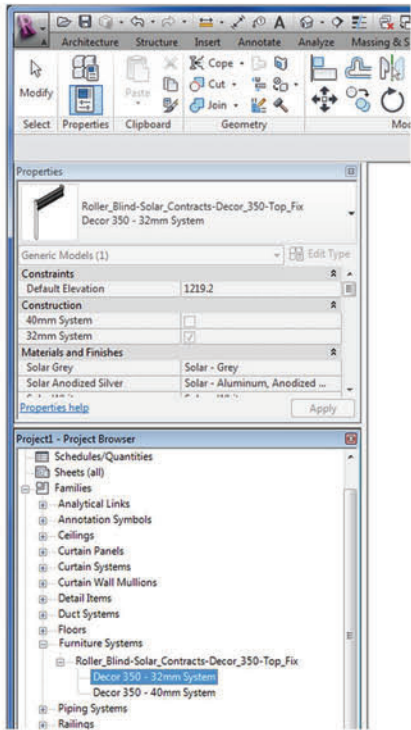


2. Now save the component that you downloaded from bimstore to your desired location on your computer (In line with your company protocols).

3. To load the component project, go to 'Insert Tab/Load Family/Select the component from you saved location' as shown below:



4. The Family is now copied & embedded into your project and can be selected from the 'Project Browser / Families / Furniture Systems' selector within your project BIM. (You can delete the item you added to your Revit Model and the Family will remain within your Project Browser.)



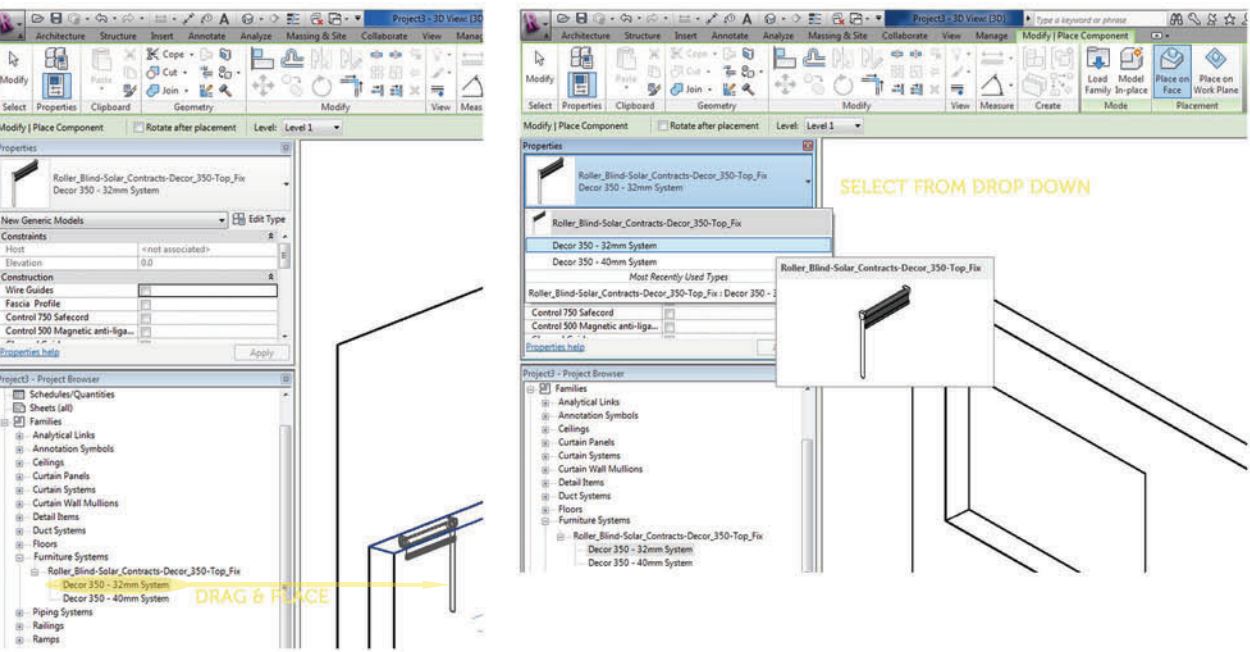
## Using the roller blind component

This next section explains how to use the Solar Contracts blind components and the additional features that have been built into the components including various types, sizes and features that Solar Contracts offer.

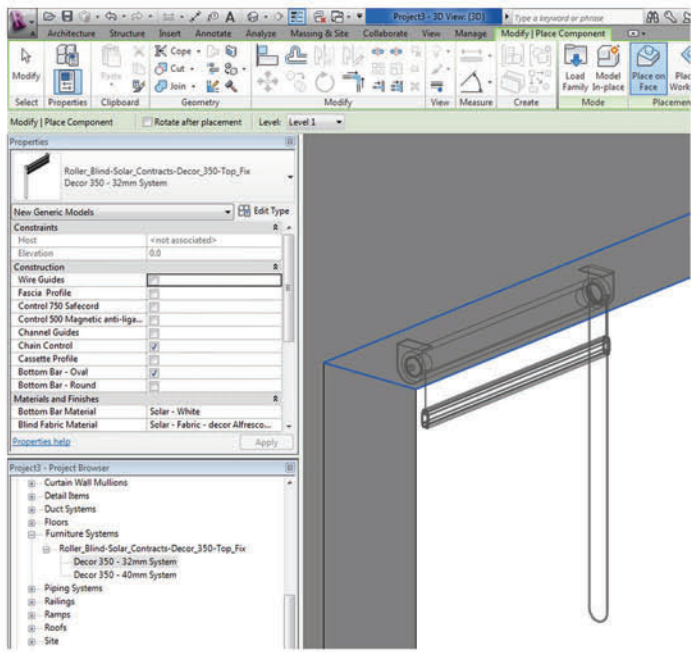


## Using the roller blind component

Now embedded into your project the Roller Blind can be selected from either the 'Furniture Systems' list in the 'Project Browser' and dragged into your model or by selecting 'Components' in the 'Architecture' tab and selecting the blind from the 'Type Selector' drop down in the Properties Box'.



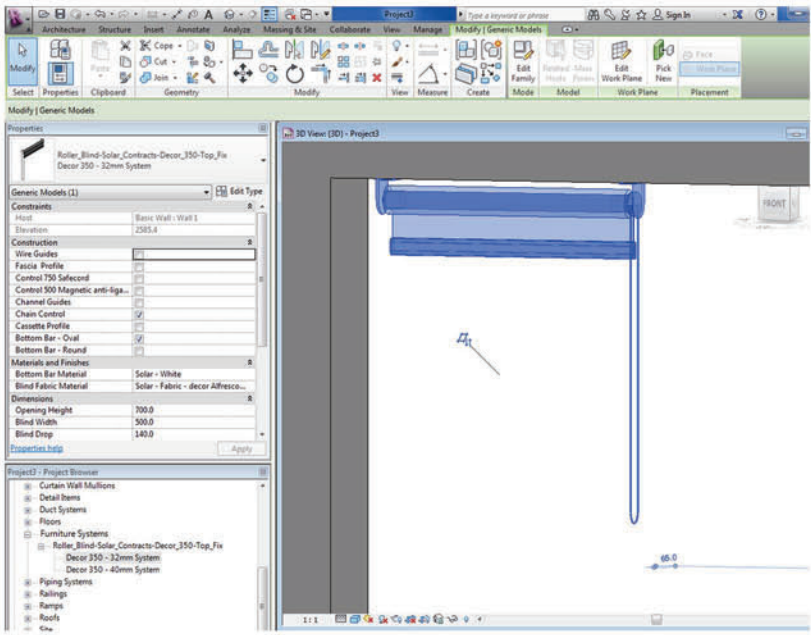
Place the component in the desired location (please note the Roller Blind families are faced based components so add them to the plane you want them to be fixed to or add a ref plane and align to it). Press 'space bar' to alter the configuration or 'tab' to cycle through the available placement planes. Once placed, the component can be flipped if required or by 'pick new' to move the blind to another plane. All technical data for each model is already included in the pre defined types.



## Applying the additional options to the blinds

Solar Contracts offer a range of options for the options for their blinds and these have been built into the component. In order to access these and apply please use the following method:

1. Go to a suitable view of the and select the blind component
2. Once the family is selected, the 'Properties' box will appear on the screen. Under the heading 'Dimensions' are the size parameters labelled 'Opening Height', 'Blind Width' and 'Blind Drop' adjust these dimensions to suit the required height and width of the opening and the distance you want the blind to deploy then click apply. The width of the blinds can also be altered via the instance parameter arrows in plan and elevation views.
3. Also in the 'Properties' box under the heading 'Construction' includes all the visibility options. Please note that some of the options are for scheduling purposes and ticking them is only for reference. Simply click to tick the box of the required item (ensuring you un-tick any item if it is not required) and then hit apply. The option will appear as part of the blind.



4. Also in the panel 'Properties' box under the heading 'Materials and Finishes' is the parameter labelled 'Blind Fabric Material' adjust this to change the Solar Contracts material of the blind fabric via the 'Materials Browser' and click apply. (Depending on the family, any options that that are available in different materials will appear here eg 'Bottom Bar Material')

## Other Notes

You can add these family components to your company template file, they will then be available without loading when starting a new project.

## Revisions

Version 1.0 - First Issue

**bimstore.co.uk**  
content, sorted

North East  
Spaceworks  
Benton Park Road  
Newcastle upon Tyne  
NE7 7LX

T. +44 (0)191 223 6600  
F. +44 (0)191 223 6610