

# Perimeos®

Concealed Blind Recess



# Perimeos®

Concealed Blind Recess

Perimeos® is a revolutionary recess solution for concealing blinds and curtain tracks. A key feature is the SpeedClip™ mounting channel. This allows the Perimeos recess profile to be installed along with the ceiling. Blinds or curtain tracks can then be easily installed later without any mess or drilling. The strong aluminium profile enables you to create a much slimmer and neater pocket than would be possible with conventional drylining methods.

Due to its innovative design the box maintains air tightness and prevents blinds being damaged by condensation from facades or adjacent steelwork.

**Made in the UK**  
Our UK manufacturing facility ensures total quality control, short lead times and low transport costs.

**Choose your Style**  
A wealth of style options including timber, fabric and powdercoat finishes to blend in with your ceiling design.

**Versatile and Flexible**  
A range of trims and transitions make Perimeos suitable for many different ceiling types and layouts.

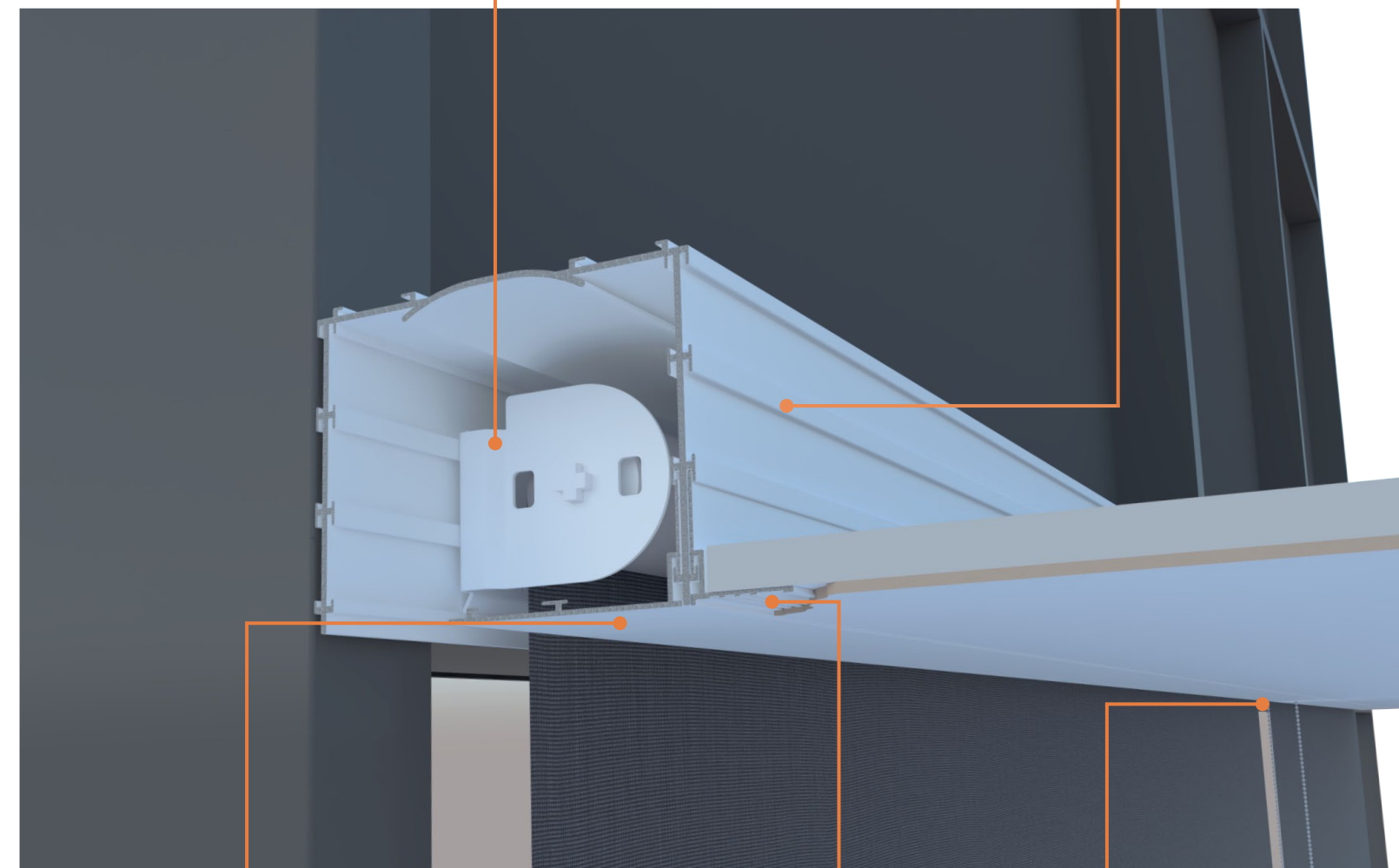
**Recyclable**  
Perimeos® is made from an aluminium alloy which is fully recyclable, conserving resources for future generations..

**Automation Ready**  
Available with integrated wiring containment for motorised blinds and tracks, saving you time and costs on cabling.

**10 Year Warranty**  
For peace of mind and reduced life cycle costs, Perimeos comes with the Decor Systems enhanced 10 year warranty.

**Universal Mounting Channel**  
Modular channels on the top and sides of the box facilitate a variety of fixing methods; suspended from soffit, integrated into MF ceiling or

**SpeedClip™**  
Innovative mounting system allows blinds or curtains to be fitted at a later date, without any drilling or mess. Ideal for CAT A fit out scenarios where blinds will not be installed until the building is occupied.



**Locking Cover Trim**  
The cover trim profile is securely locked onto the pocket.

**Modular Transition Options**  
Versatile modular design allows different transition trims for multiple ceiling types and configurations.

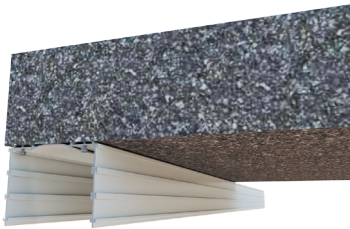
**Chain Guide**  
A tough polymer insert guides the blind operating chain through the cover trim for smooth and quiet operation.



# Options

Indicates standard option

## MOUNTING OPTIONS



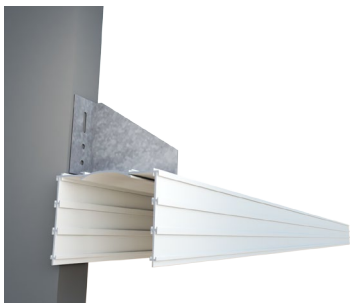
Direct to Soffit

Where space is limited the profile can be fixed directly to the slab or structure above.



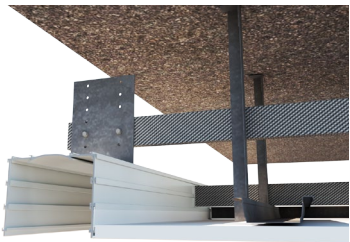
Suspension

Perimeos can be suspended from the slab or structure by a two-part adjustable suspension bracket



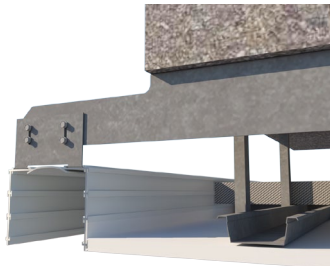
Face Fixed

Face fixed brackets are available for fixing directly to curtain walling or vertical surfaces.



Grid Fixed

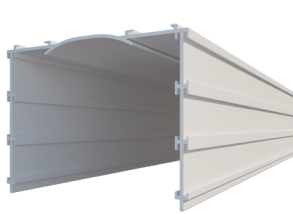
The standard suspension bracket can be side fixed into MF plasterboard ceiling joists.



Offset Bracket

For situations where the concrete slab doesn't extend far enough, an offset bracket provides cantilever support.

## BOX TYPES



Standard Perimeos

Suitable for all blind types up to 4m drop.



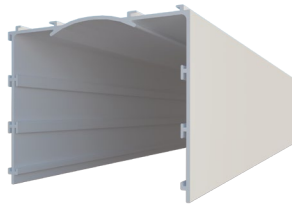
Perimeos Smooth

Smooth faced version of the standard Perimeos for exposed situations.



Perimeos Lite

Narrow version of Standard for limited space situations. Suitable for up to 3m drop, Limited blind hardware options.



Perimeos Multi

Larger version of Lite, can be recessed or for use in exposed situations.

## FINISHES



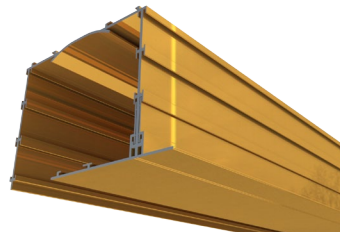
White Powdercoated

Standard finish is RAL 9010 Soft White.



Custom Powdercoated

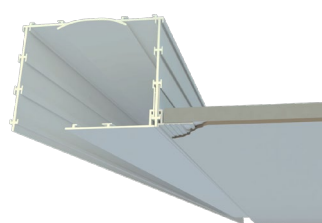
Powdercoated to your colour preference.



Custom Metallic

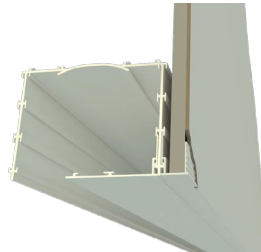
A range of special anodised and metallic powdercoat finishes.

## TRANSITIONS



Horizontal Drylining

For plasterboard MF ceilings, the transition acts as a stop beading and is keyed for skim.



Vertical Drylining

For bulkhead style situations where the plasterboard meets the box vertically.



Plain Transition

Suitable for suspended ceilings, a plain 25mm edge allows the tiles and tee sections to rest on it.

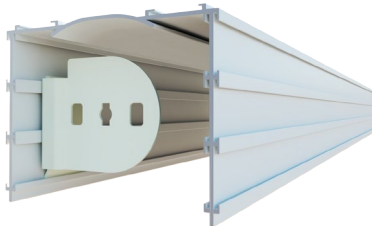
# Options

## ACCESSORIES



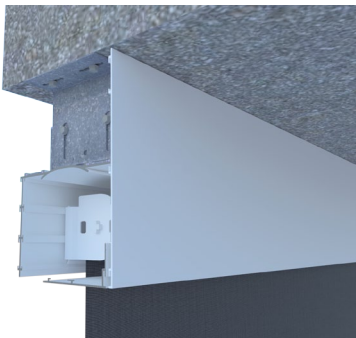
### Cable Management

For motorised blinds, a cable containment profile keeps the power and control wiring safely out of sight.



### SpeedClip™ Bracket

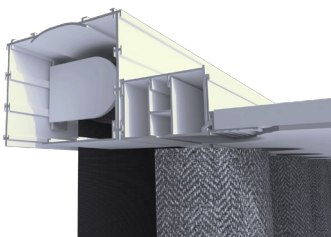
Blinds and curtain tracks are mounted via the innovative SpeedClip™ bracket which allows products to be installed and removed without any mess or drilling.



### Fascia Profile

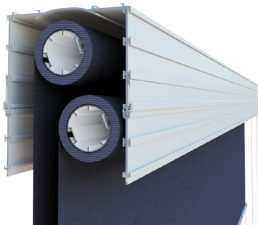
For exposed soffit situations use a fascia to conceal the brackets and create a seamless look.

## OPTIONS



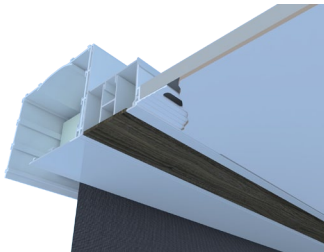
### Curtain Track Profile

Add a recessed curtain track to the front or back of the box with this neat transition. The curtain track carrier profile accommodates either hand drawn or motorised curtains.



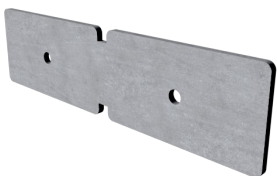
### Double Blind Box

Using the box extension profiles Perimeos can be modified to cater for double roller blinds.



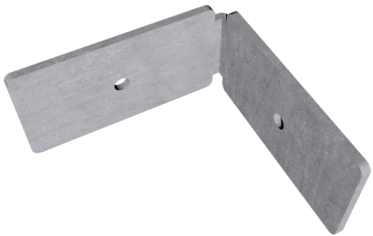
### Bridge Profile

The bridge profile is a spacer extrusion which can accept a decorative filler to create stunning effects in timber, metal, acrylic, fabric and more.



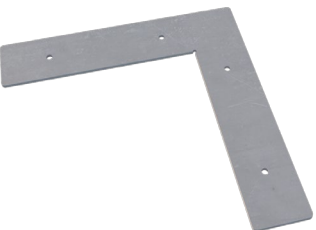
### Splice Plates

Steel splice plates can be used inside or outside the box to provide a perfectly flush join. A right angled version is used for corners.



### Corner Splice Plate

Corner splice plates are used for joining 90° mitred corners.



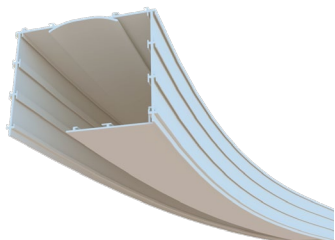
### Corner Bracket

Corner brackets are used for in the top of the box for joining 90° mitred corners.



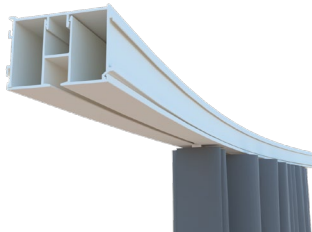
### Side Channels

To create a full blackout blind, add side channels which neatly integrate with the main Perimeos profile.



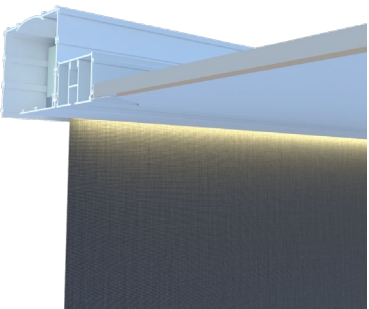
### Curved Perimeos Box

Perimeos can be custom curved to follow the façade. Don't let the blind recess hold back your creative design.



### Curved Curtain Track

Manual and motorised recessed curtain tracks in Perimeos can also be curved to follow architectural features.



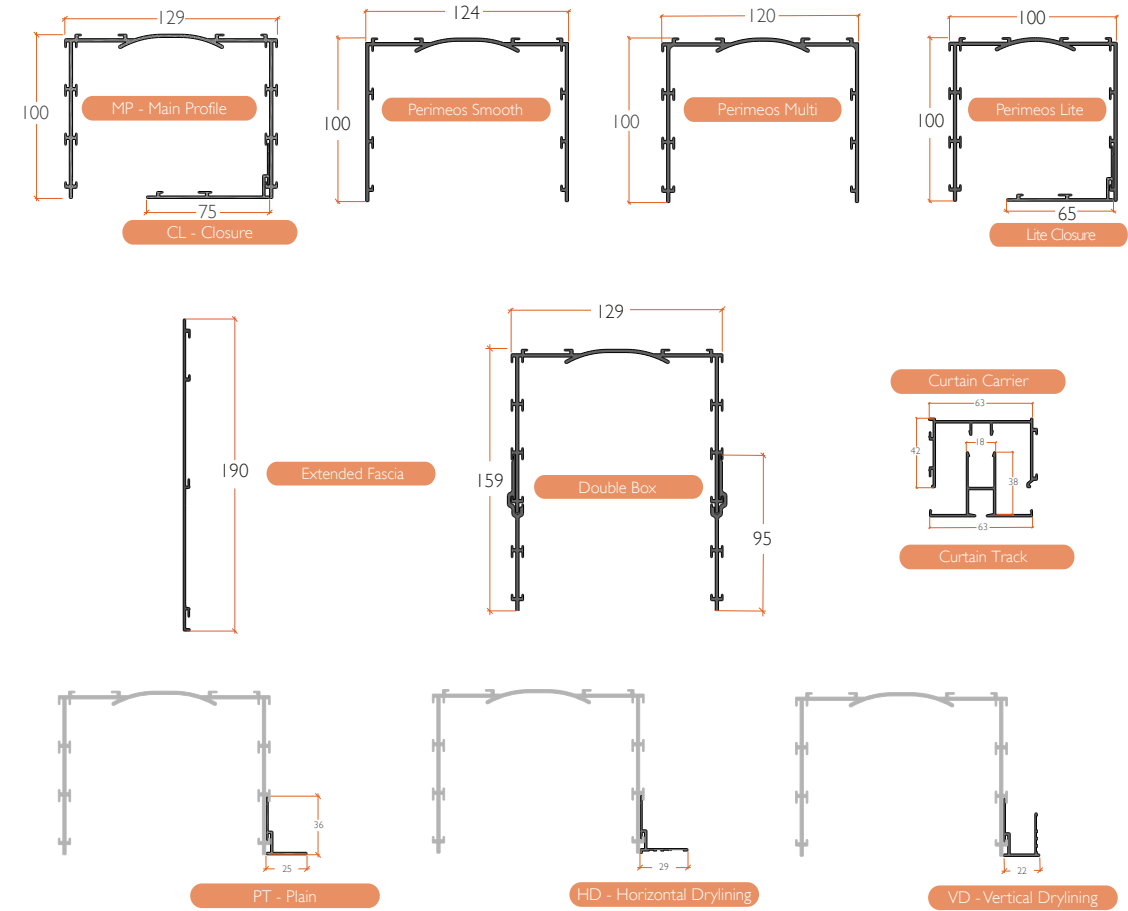
### Perimeter Lighting

For a soft backdrop lighting effect, Perimeos® can accept LED strip lighting and neatly conceals the cabling and drivers.

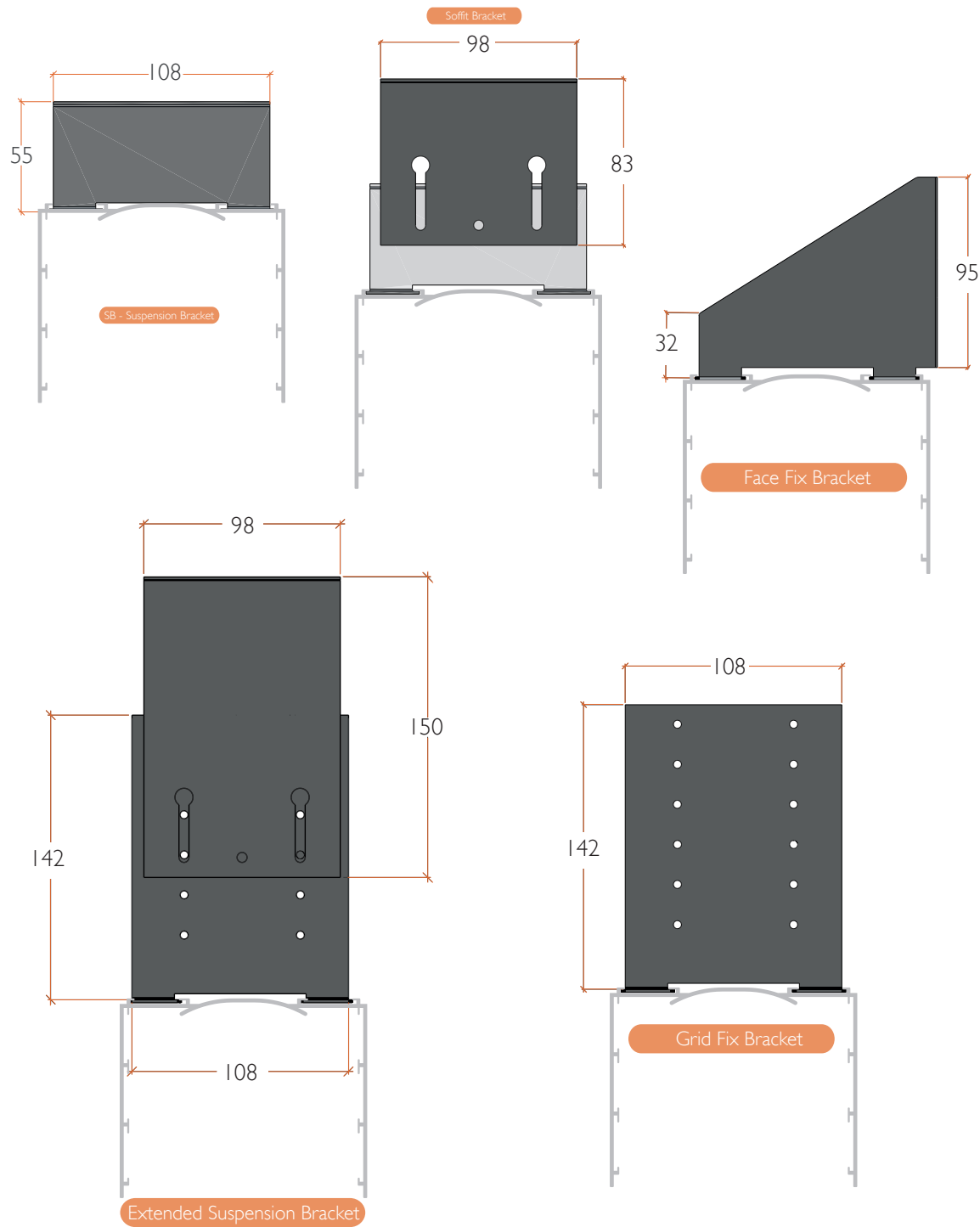
# Technical

## PROFILE DIMENSIONS

All dimensions in millimetres



## BRACKETS TYPES



## PROFILE LENGTHS

Perimeos is available in 3m lengths as standard. For quantities over 500 linear metres, it can be produced in a custom length.

## NBS FORMAT SPECIFICATION

### Perimeos® Concealed Blind Recess

**Manufacturer:** Decor Systems

Web: [www.decor systems.co.uk](http://www.decor systems.co.uk)

Email: [info@decor systems.co.uk](mailto:info@decor systems.co.uk)

Tel: +44 (0)1302 761122

**Product reference:** Perimeos® Concealed Blind Recess

**Glazing-side Accessory:** Curtain Track / Decorative Bridge / Fascia / None\*

**Glazing-side Transition:** Plain / Horizontal Drylining / Vertical Drylining / None\*

**Room-side Accessory:** Curtain Track / Decorative Bridge / Fascia / None\*

**Room-side Transition:** Plain / Horizontal Drylining / Vertical Drylining / None\*

**Fixing:** Direct to Soffit / Two-Part Suspension Hanger / Face Fixed/Offset Bracket/Grid Fixed/Special\*

**Hardware Finish:** Powdercoat White RAL 9010 / Powdercoated to RAL xxxx / Other Metal Finish TBC\*

**Accessories:** Closure / Side Channels / LED Lighting / Cable Management / Splice Plates\*

\*Delete as appropriate

---

## OTHER PRODUCTS

Vertical Blinds	Panel Blinds
Venetian Blinds	Curtain Tracks and Poles
Roof Blinds	Cubicle Tracks
Pleated Blinds	Curtains
Roman Blinds	